

CISCO SPA504G



Head Office:
Level 1 21 Shierlaw Ave Canterbury 3126, Victoria, Australia

1300 0 JINGL
1 3 0 0 0 5 4 6 4 5

www.jingl.com.au

Configuring Cisco SPA504G

1. View and record the unique MAC address of the handset which can be found at the base of the handset.



- Logon to the jingl web portal, using specific customer domain URL <https://customer.jingl.com.au>
Enter your User Name and Password

My Account

Remember Me

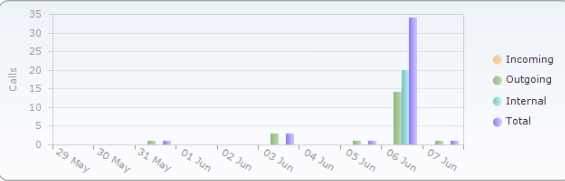
Log In
[Forgot Password](#)

Presented with Dashboard

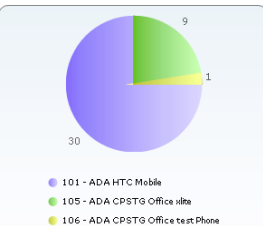
Dashboard | Calls | Settings | Reports | Status

Dashboard

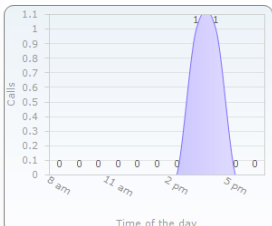
Recent Calls Overview
Calls for last 10 days



Calls per extension
Top 5 extensions for last 10 days



Average Calls per Time of Day
Calls for last 10 days



Handsets
The total number of handsets setup for the account.

7 of 100 configured (7%)

Queues
The total number of queues configured for the account.

1 of 8 configured (12.5%)

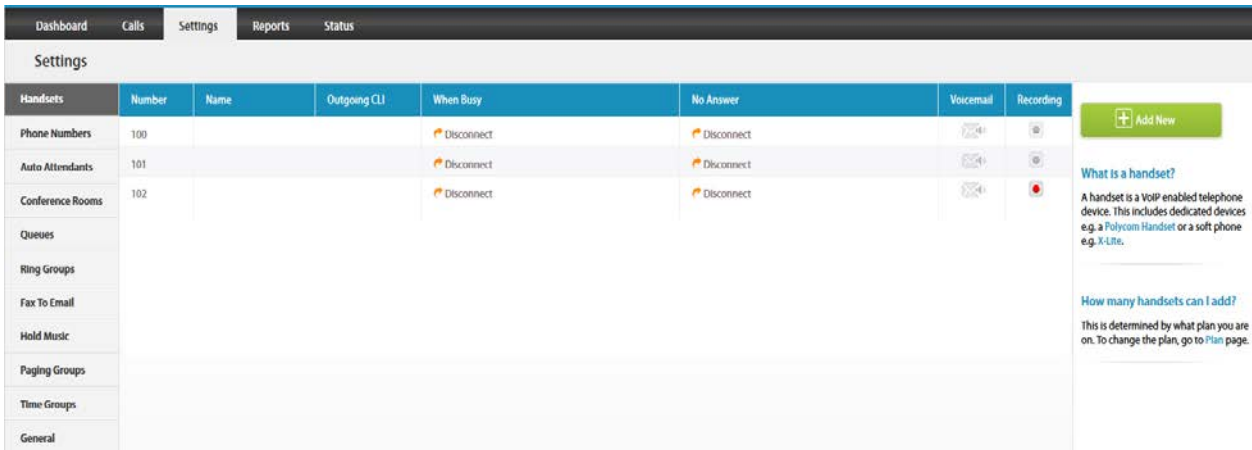
Conferences
The total number of conferences setup for the account.

1 of 5 configured (20%)

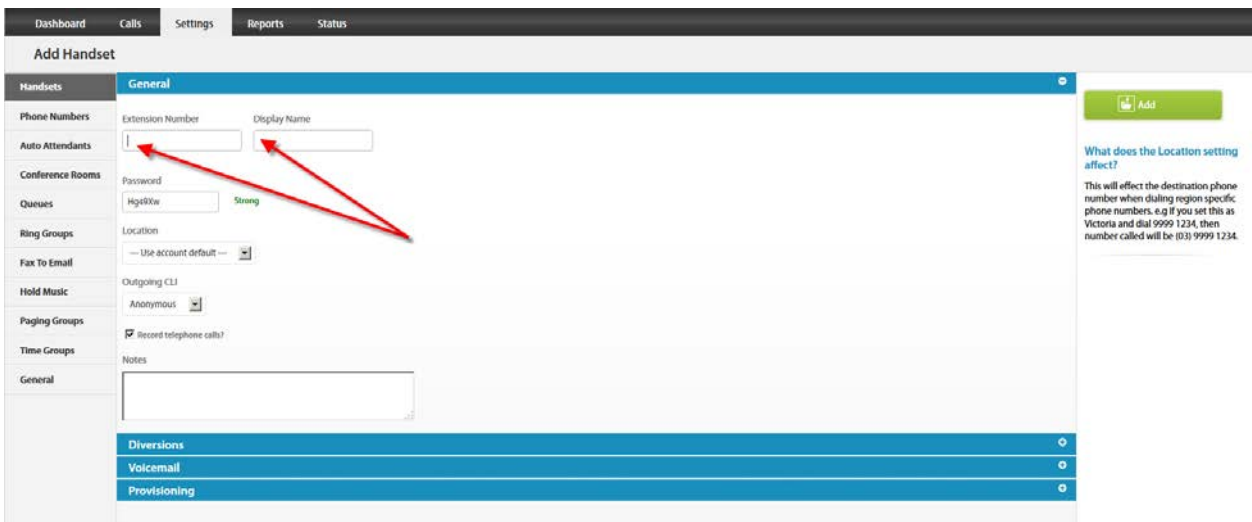
Ring groups
The total number of ring groups configured for the account.

1 of 5 configured (20%)

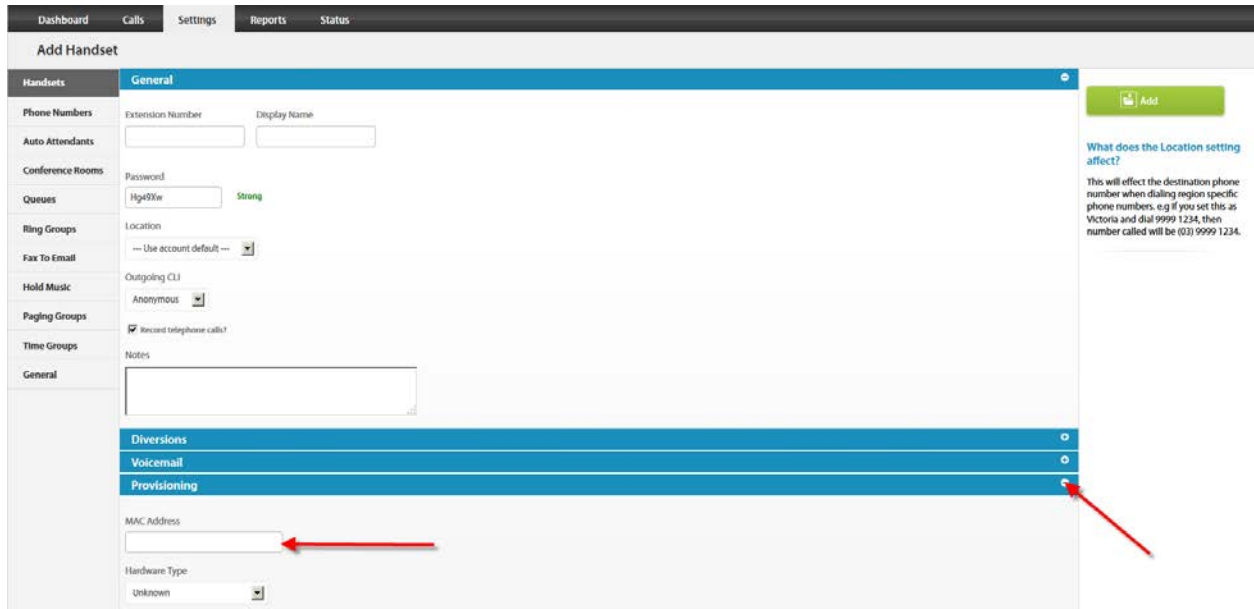
3. Select and click the settings menu



4. Click on "Add new" In general tab, choose and enter extension number and a display name

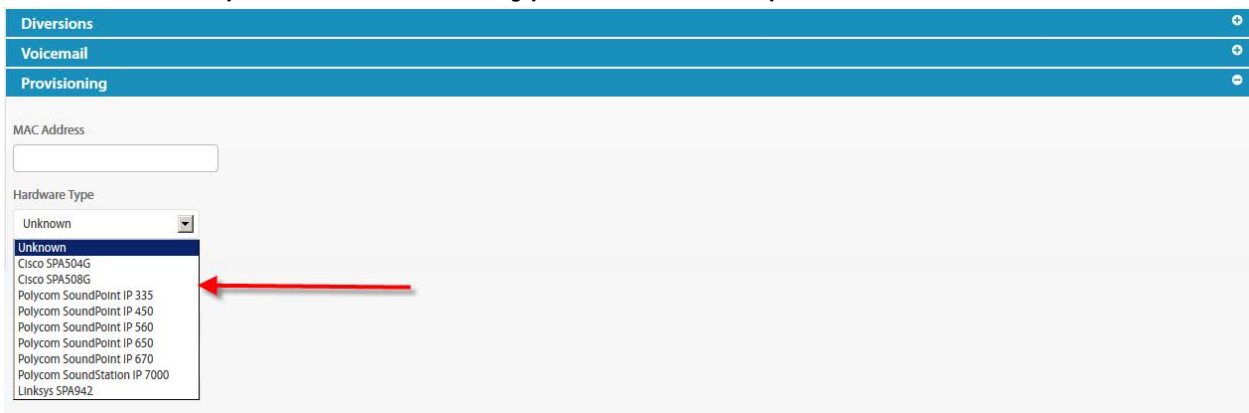


5. Select and expand Provisioning tab. Enter the MAC address of the phone



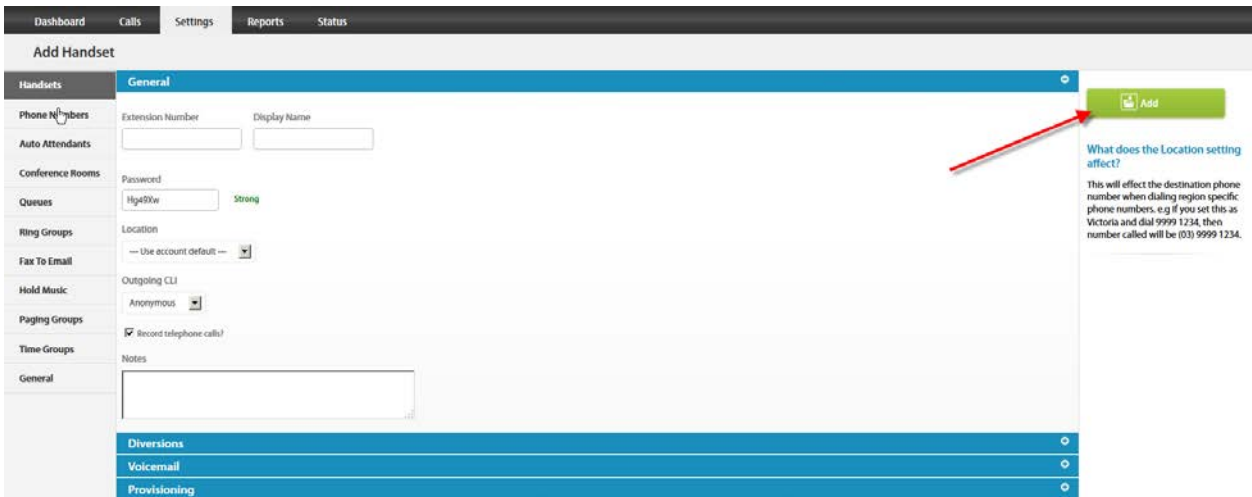
The screenshot shows the 'Add Handset' configuration page. The 'Provisioning' tab is selected and expanded. A red arrow points to the 'MAC Address' input field, and another red arrow points to the 'Provisioning' tab header.

6. Select and expand Hardware Type. Select the phone model



The screenshot shows the 'Hardware Type' dropdown menu in the 'Provisioning' tab. The dropdown is open, showing a list of phone models. A red arrow points to the 'Cisco SPA504G' option.

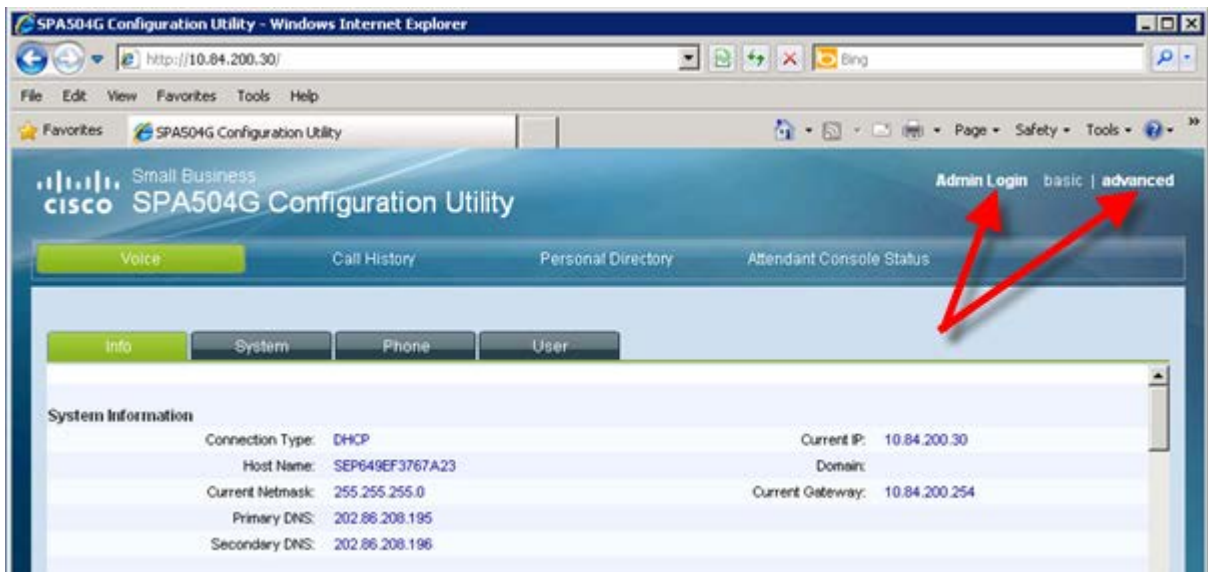
Click Add to finish your extension configuration.



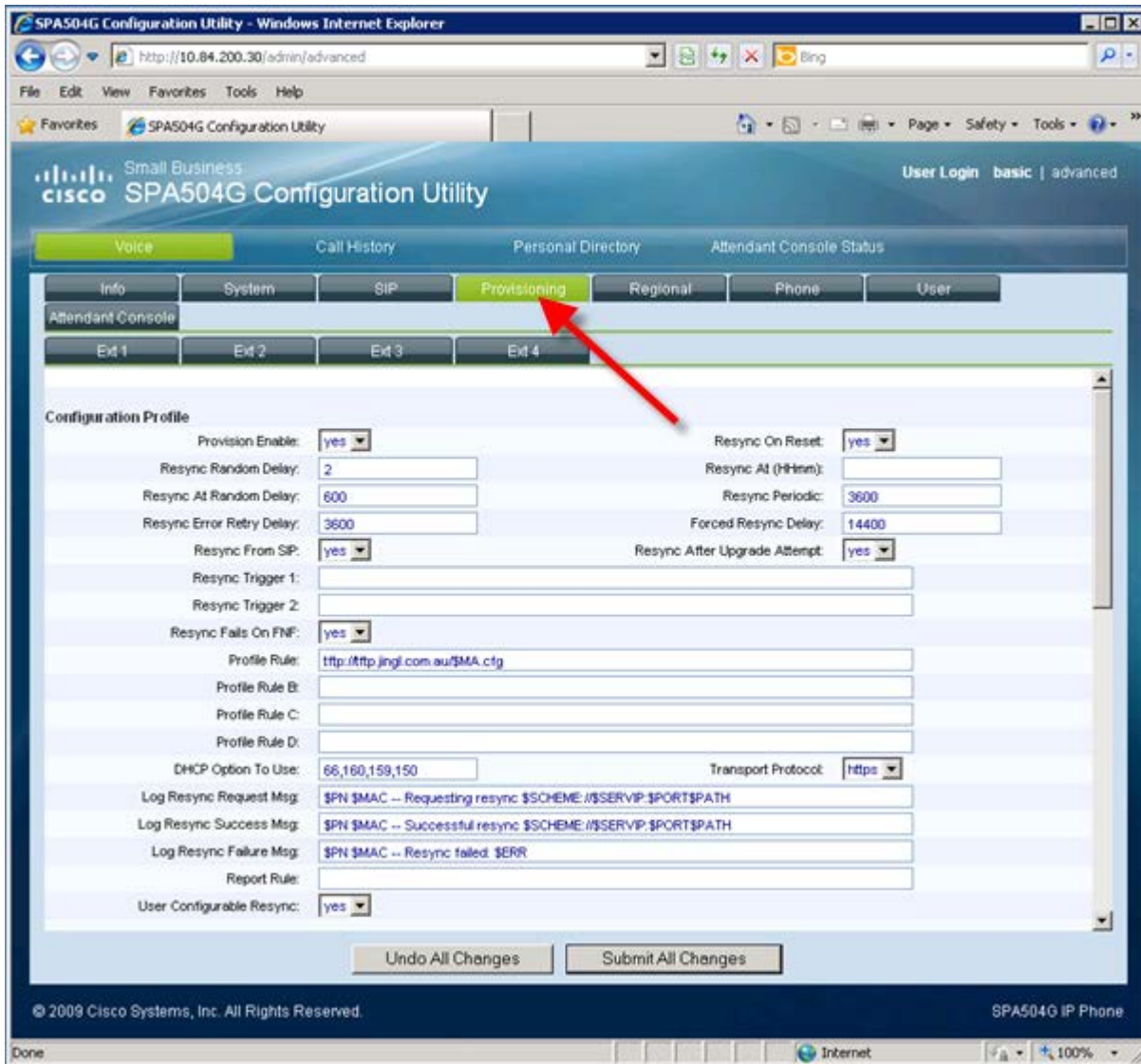
7. Connect your phone on the network with a DHCP server, and find out phone's IP address.

On handset press Menu > Network > Current IP Address (Menu, 9,2).

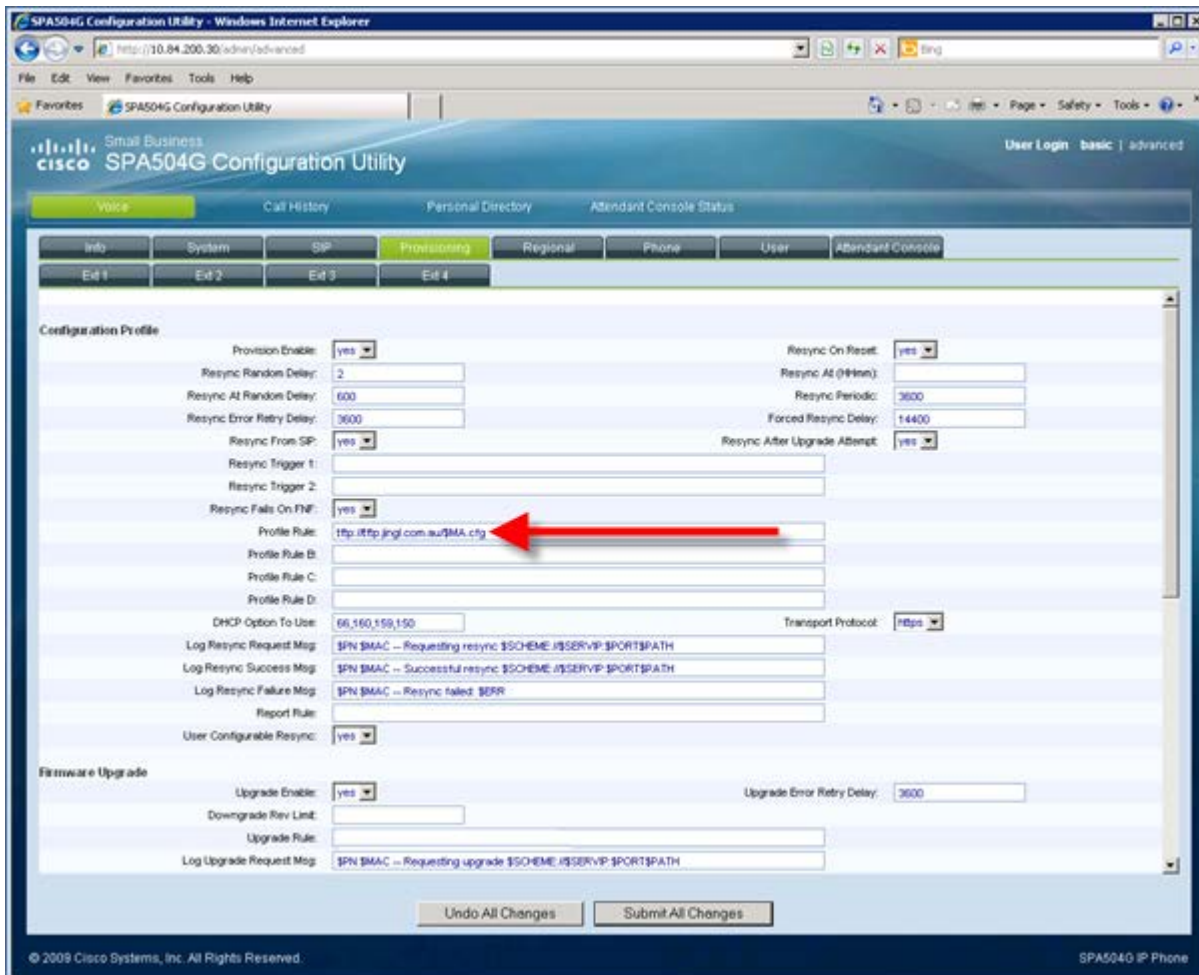
8. Use a compatible browser to browse the phone web menu using phones IP address Login to the web interface go to "Admin Login" and select "Advanced"



9. Browse to settings → Provisioning Server



10. Enable the provision and set the "Profile Rule" with the following string "http://tftp.jingl.com.au/tftp/\$MA.cfg"



11. Click on "Submit All Changes" button to save the configuration
12. Restart the phone for the new settings to take place, phone will download and configure all settings from the provisioning server.